

# A guide to running in the ANUSA Elections

Discover the responsibilities our student representatives take on, and learn how to get involved!

- How do I run for an ANUSA position?
- How should I get started?
- What election support do I get?



## What is ANUSA?

The ANU Students' Association or 'ANUSA' is the peak representative body for all undergraduate students and ANU College students at ANU. ANUSA is run by thirty nine elected student representatives and a team of professional staff members. Student representatives are elected by the undergraduate student body in elections that take place in semester two.

## What is this guide for?

This guide is aimed at providing an overview for anyone intending to run for a position during the elections held by ANUSA. Please note that only ANU undergraduate students (including non-award students) are eligible to stand for election, and successful candidates hold office for 12 months commencing on 1st December.

Along with reading this guide, it is recommended that you do your own research by referring to the ANUSA Constitution for the formally-worded electoral regulations, as well as by consulting previous reps who've held the position.

All information in this guide reflects the information available as of 1st June 2019, and has incorporated the additional changes reflected by the motions presented during the 2019 AGM.

ANUSA would like to thank Brandon Tan, Kai Clark, Isabella Keith, and Bec Donald-Wilson for their work and contributions towards producing this electoral handbook.



# How do I get started?

If you're interested in running for ANUSA, a good start is to ask yourself, "Why?"

Do you feel passionate about student advocacy or in event planning on campus?

Is there a certain issue on campus you feel the ANU or ANUSA hasn't addressed?

Do you seek to reform ANUSA so it can best advocate for the student body?

Essentially, what problem exists on campus and what do you want to do to fix it?

Whatever your reasons for running, having a goal in mind will help give you direction not just in your campaign but, if elected, your term. **But you also need to be able to get there.**

Do you feel passionate about student advocacy or event planning on campus?

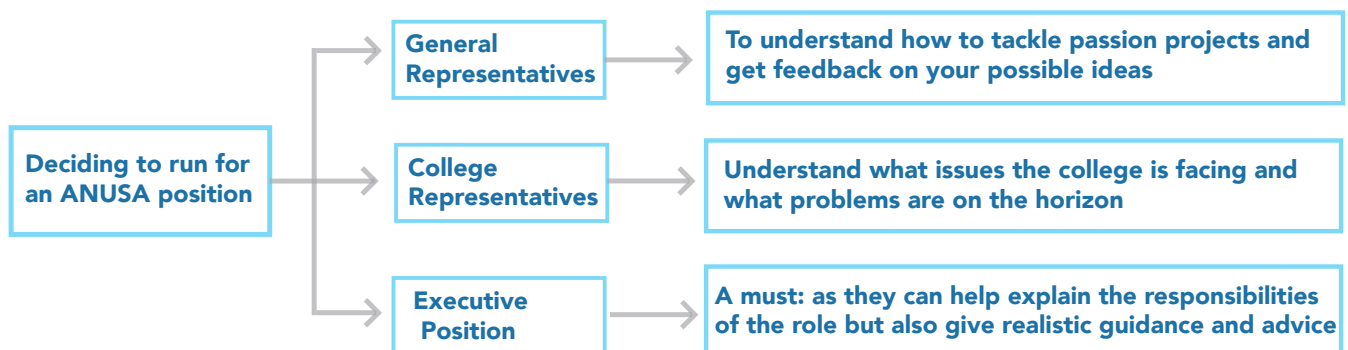
What particular skills or attributes can you offer?

**These are difficult questions to answer, but they're good to think about when asking yourself why you want to run and how to best do so.**

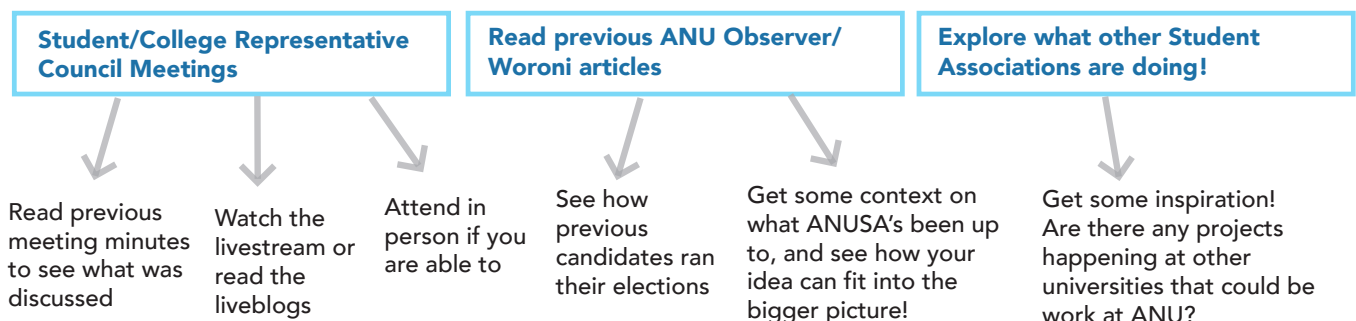
One good way to start answering these questions is to ask the current representatives on ANUSA. Just remember that it's always good to have your own ideas.

Make sure to reach out and consult people who currently hold the role you are interested in nominating for.

Why should I do that?



## What other ways can I source more information?



It's also good to think more broadly about ANUSA's purpose. It's the peak representative body on campus that operates on three 'pillars', advocacy, social and welfare.

Is what you want to do something that helps advance student advocacy? Do you want to see more social events on campus? Or are you running on a platform of providing more services or support for students?

These are all simple suggestions and we encourage you to think outside of the box as much as you can. Whatever you choose to have as your goal, develop a plan and run with it.

## What positions can I nominate for?

There are broadly three different types of roles that are contested during an ANUSA election, Student Representative Council (SRC), ANUSA Executive (which sits within the SRC) and roles which are not part of SRC but available as an elected position

### The ANU Students' Association Student Representative Council

- 7** Department Officers
- 14** General Representatives
- 12** College Representatives (2 per academic college)

#### ANUSA Executive

- President
- Vice-President
- Treasurer
- General Secretary
- Education Officer
- Social Officer

### Not part of SRC but available as an elected position

- 5** NUS Delegates
- and Undergraduate Member on ANU Council

## Executive roles

Role	Duties
<b>President</b>	Sits on the ANU committees to ensure the undergraduate student voice is heard in these forums. Together with the Vice President, the President is involved in representation of, and advocacy for undergraduate students.  The President is also ANUSA's official spokesperson, communicating ANUSA activity and University changes to students and relevant groups.
<b>Vice-President</b>	One of the Vice-President's key areas is in student advocacy. They also manage the Brian Kenyon Student Space in the Di Riddell Student Centre.
<b>Treasurer</b>	Oversees ANUSA's financial affairs, including arranging for the books and accounts to be audited.
<b>General Secretary</b>	Responsible for the internal governance of ANUSA. They run and organise ANUSA's representative council meetings, and interpret the Constitution.
<b>Education Officer</b>	Deals principally with ANUSA's Higher Education policy. They are responsible for organising tertiary education campaigns (often in conjunction with the National Union of Students) and campaigns on other issues that affect students.
<b>Social Officer</b>	Responsible for organising and overseeing O-Week, Bush Week, the end-of-year clubs ball and ANUSA's social program.

## The other members of the SRC are comprised of:

Role	Duties
<p><b>College Representative</b></p> <p>(Two reps for each Academic College at ANU: CASS, Law, CBE, CAP, CECS, JCOS )</p>	<p>College Reps analyse academic issues of relevance to their College and formulate strategies and campaigns to ensure that the academic interests of students are represented. Academic issues are discussed at College Representative Council meetings where each team delivers a report.</p> <p>They also sit on the College Education Committee of their respective academic College.</p> <p>They also organize College-specific events and help-out with many of ANUSA's events and initiatives.</p> <p><i>Note: You are only allowed to run for a College Rep position if you are enrolled in that College.</i></p>
<p><b>General Representative</b></p> <p>(Fourteen available positions)</p>	<p>Tasked with implementing important projects that lie outside Executive portfolios. Gen Reps work in groups and report to the Student Representative Council. Gen Reps are invaluable in ensuring that ANUSA makes visible improvements to campus life over the year.</p> <p>Gen Reps are also a key communication link between the student body and ANUSA with regard to current issues. They also are the primary means of keeping the Executive accountable.</p>
<p><b>Department officers</b></p>	<p>ANUSA has seven autonomous departments representing marginalised groups of our community. They head up the autonomous collectives that assist in advising and directing the actions and initiatives of the Department.</p> <p><i>Note: Department officer elections are usually held within department meetings.</i></p>

Additionally, positions for NUS Delegate and Undergraduate Member on University Council are contested during the elections.

However, these roles are not formally part of the Student Representative Council.

Role	Duties
<p><b>NUS Delegate</b></p> <p>(Five positions available)</p>	<p>The successful candidates will serve for a term from the commencement of the Annual State Conference immediately following their election until the commencement of the next Annual State Conference following their election.</p> <p>No student may be elected as a Delegate to the National Conference by the students represented by a member Organisation, where that student has already been elected as a Delegate to the same National Conference by the students of another Member Organisation.</p>
<p><b>Undergraduate Member on ANU Council</b></p>	<p>As the Undergraduate Member on ANU Council, they must attend University Council meetings and are invited to attend SRC meetings.</p>

## What Support do I get?

### Expression of Interest Form

ANUSA publishes an “Expression of Interest Form”. The results from the survey are only open to ticket convenors.



### Probity Officers

Probity Officers are ANUSA officers and have powers of investigation and inquiry during the election. During this time, they can offer help on what you need to do during the campaign, or refer you to someone who is able to assist you. They conduct briefings ranging from conducting a safe and legal campaign and campaign finances.

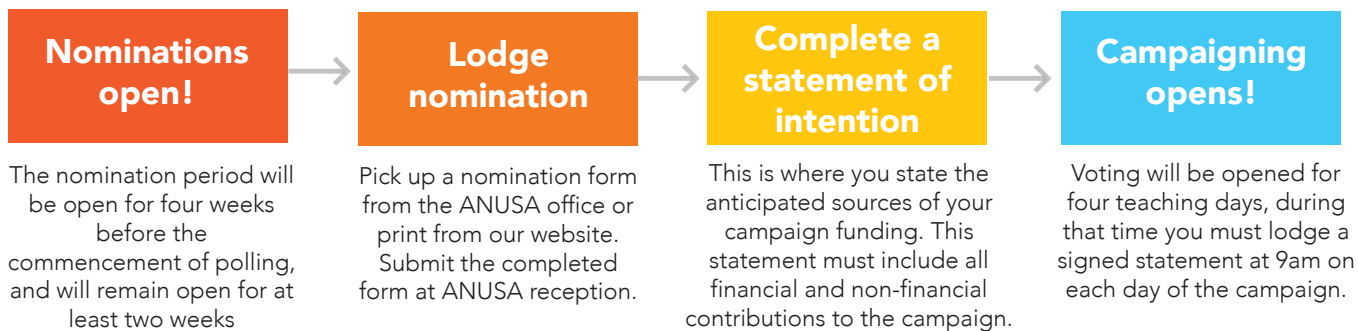
### Support Options

Whether running on a ticket or independently, campaigning for 4 days can be exhausting, so don't forget that support is available. It's also important to balance your campaigning alongside your academic responsibilities.



## More details on the election process

Following changes made during the 2019 AGM, all candidates can now register as a ticket to receive funding and other benefits. Each ticket requires nominations from 5 students (this can include yourself). If you don't do this, you will then be classified as "ungrouped" and won't receive funding and other benefits.



You can choose to run on a registered ticket as an individual, a small group or as a 'full ticket'. There is **no minimum number** on the number of people on a ticket, but tickets are limited by the number of positions available on ANUSA. **This means that each ticket can only contest up to 14 Gen Rep candidates, 2 College Reps for each academic college, 5 NUS delegates, as well as one person running for each exec role and one Undergraduate Member on University Council.** People running for a role on the SRC can also contest the roles of NUS delegate or Undergraduate Member on University Council.

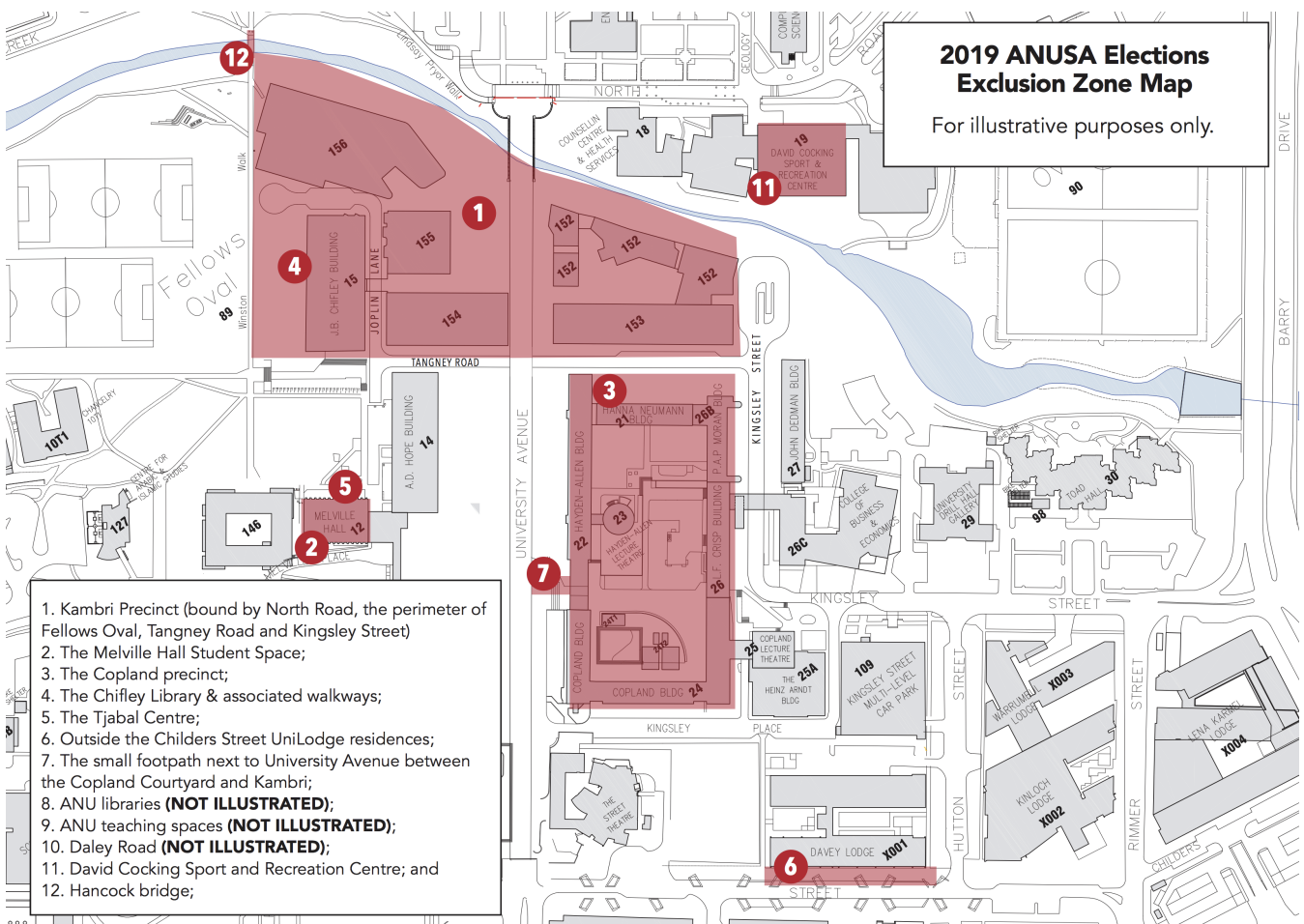
Departments usually elect their representative Officer within Department meetings, rather than in ANUSA elections. Information about ANUSA Departments is available on the ANUSA website.



# Exclusion Zones

Exclusion zones stipulate areas within the ANU campus where you are not permitted to campaign. You should not display any election-related campaign material (shirts, banners, posters, merchandise), discuss campaign policies, or handout flyers, as it is an offence under the electoral regulations. For illustrative purposes, the red areas within diagram below highlight some of the exclusion zones on campus. Remember you should not approach anyone who has chosen to wear an "opt-out" lanyard.

For an up to date and full list of the exclusion zones during the ANUSA election, please refer to Schedule B of the ANUSA constitution.





## Limits on campaign expenditure

There is a set amount you can use for your election campaign, which is determined through the formula provided in section 2.9.1 of ANUSA Electoral Regulations. It's important to make sure you're familiar with all the information in the Electoral Regulations including campaign expenditure.



**Amount for when a ticket contests for only one position**

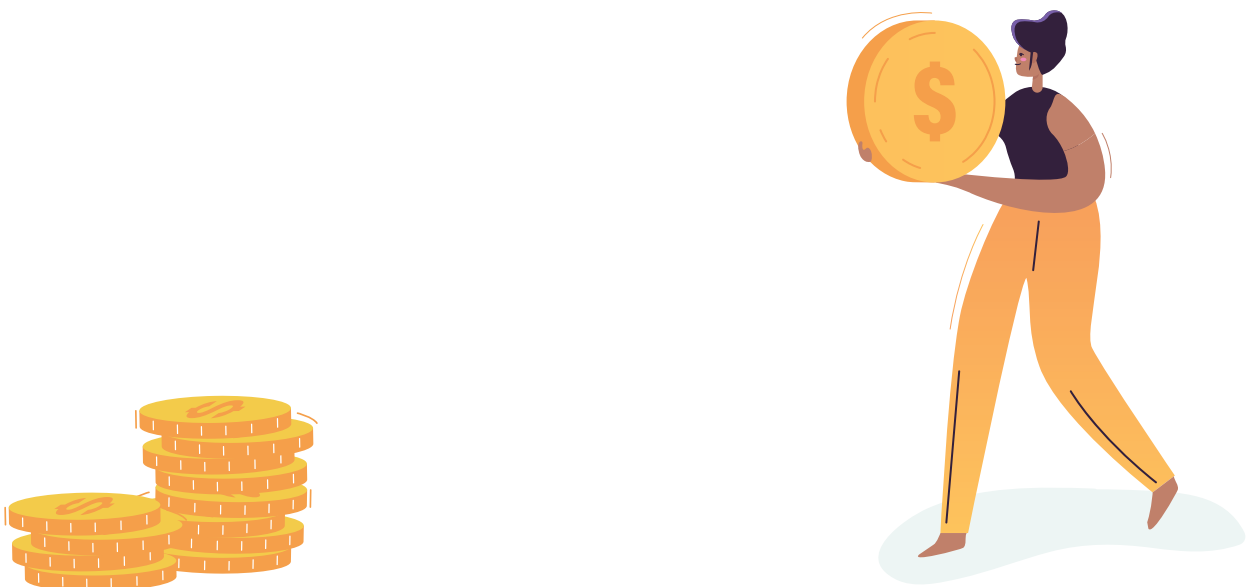


**Maximum amount for a "full ticket" team**

This amount limits how much you can broadly use on promotion-related items such as merchandise, clothing & costumes, and advertising. Full information can be found within section 2.10 of the Electoral Regulations. It is an offence to offer food and drinks during your campaigning as they are considered an enticement to vote. Using animals in the campaign is not considered an enticement to vote, but they must be counted as part of your campaign expenditure.

Non-financial contributions include sundry items such as glue and paper: things you got/did for free but would otherwise have paid for.

Notably, it is a breach in campaign rules to falsify any campaign expenditure, so please declare all expenditure. For instance, paying someone to film your campaign video ads will need to be reported as a financial contribution, but if you create your own video, it should be reported as a non-financial contribution. If in doubt, ask the probity team.

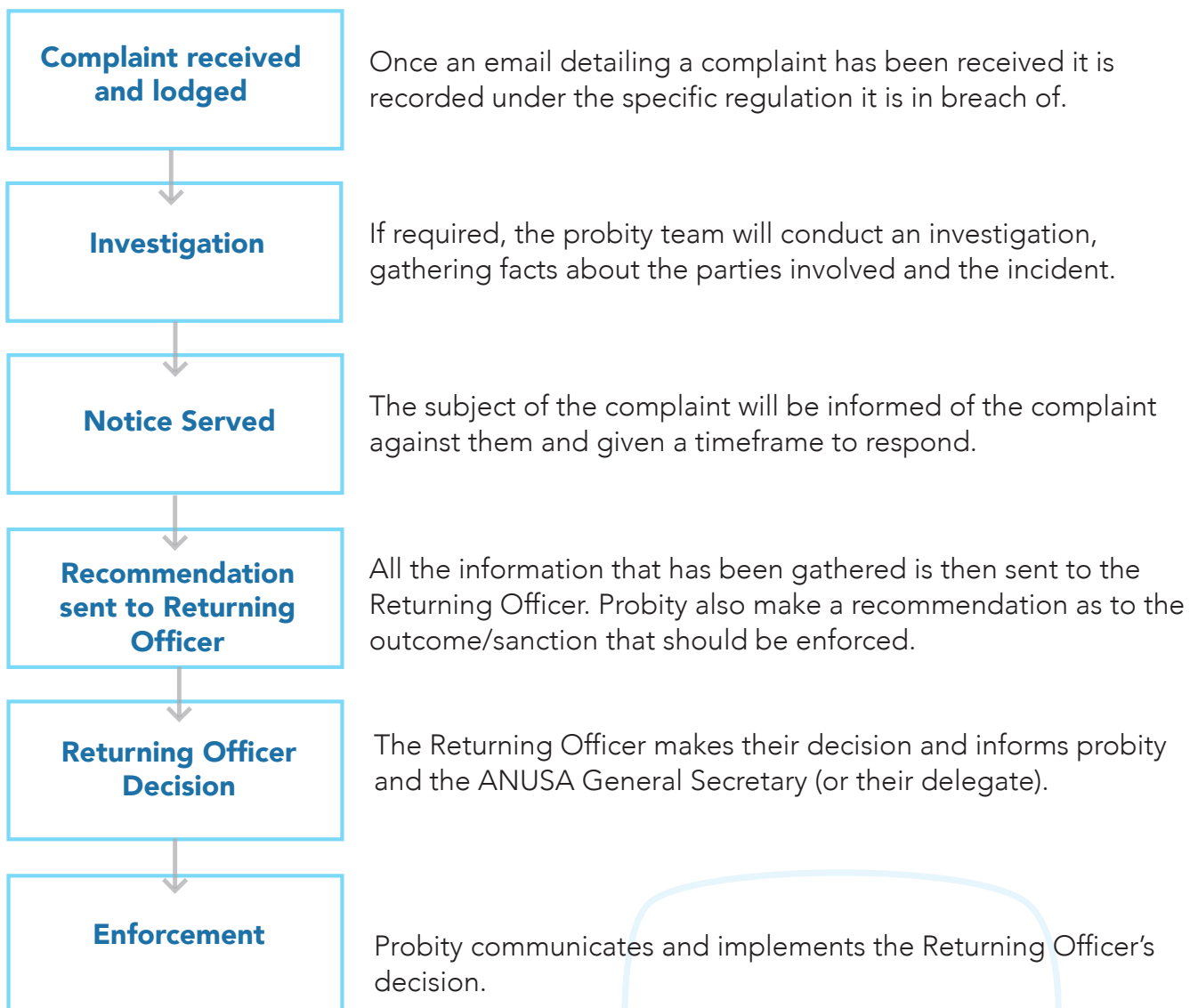


## What happens when an election complaint is submitted?

To ensure a fair campaign, there are restrictions on what you can do. A full list of electoral offences can be found in Section 3.1 of the Electoral Regulations within the ANUSA constitution.

Following a breach of electoral regulations, Probity Officers will make a recommendation to the Returning Officer. The Returning Officer will decide on sanctions such as issuing a warning, a fine, a campaign ban, or even disqualification.

If you have any concerns during the campaign period please contact the Probity Officers at [sa.probityofficers@anu.edu.au](mailto:sa.probityofficers@anu.edu.au).



## On a final note

If you aren't successful in the ANUSA elections, there are still lots of ways to get involved.

Committees such as Social Committee, Education Committee, and Wellbeing Committee are integral to the running of ANUSA, and anyone can attend meetings, organise events and advocacy campaigns. There are also positions available within these Committees for you to take a more active role.

ANUSA also has seven autonomous Departments: Disabilities, Ethnocultural, Environment, Indigenous, International, Queer\*, and Women's. These Departments are open to anyone who identifies as being part of the group they represent, and they all host regular meetings and advocacy campaigns that you can get involved in.

And don't forget that every undergraduate student is **automatically a member of ANUSA**. If you need any help at all, ANUSA should be your first port of call. We offer free legal services, Student Assistance, as well as offering free breakfast and other services in the Brian Kenyon Student Space.

